



# Aquaterra

by **CGS Labs**



## BIM READY CHANNEL / RIVER ENGINEERING DESIGN SOFTWARE



**DesignSense**

DesignSense Software Technologies Pvt. Ltd.  
#365/8, "Hasmitha Avenue", First Floor  
16th Main Road, Jayanagar 4T Block,  
Bengaluru - 560 041, India.

Call: +91 9241438300 (voice & whatsapp)  
www.thedesignsense.com



# BIM READY CHANNEL / RIVER ENGINEERING DESIGN SOFTWARE

Aquaterra is a professional software for channel and river engineering design. It integrates MIKE FLOOD and HEC-RAS hydraulic calculations with flood protection design, torrent and landslide control, and irrigation systems design.

Using its flexible, dynamic data model, it supports BIM workflows and processes, and IFC standardized data format. Carefully designed UI and workflows are consistent with the engineering practices. This makes Aquaterra surprisingly fast-to-learn and easy-to-use.



TRUSTED MOST  
BY DESIGN PROFESSIONALS

## FIELDS OF USE

01 RIVER CHANNEL DESIGN

02 FLOOD PROTECTION DESIGN

03 TORRENTS AND LANDSLIDES CONTROL

04 RIVER RESTORATION

05 IRRIGATION SYSTEMS DESIGN

06 DAM RESERVOIRS DESIGN

07 WETLAND PROTECTION

08 EARTHWORKS: QUARRIES, OPEN MINE PITS, DUMP AREAS, EARTH BARRIERS, ETC

08 REHABILITATION OF LANDSLIDES

## REFERENCES

ADT | ΩΜΕΓΑ

LAHMEYER  
INTERNATIONAL

PÖYRY

INŠTITUT  
ZA VODE  
REPUBLIKE  
SLOVENIJE | Institute  
for Water of  
the Republic  
of Slovenia

Институт  
за  
водoprivredu  
Jaroslav

ipz

# FEATURES

## SUPPORT FOR BIM AND IFC

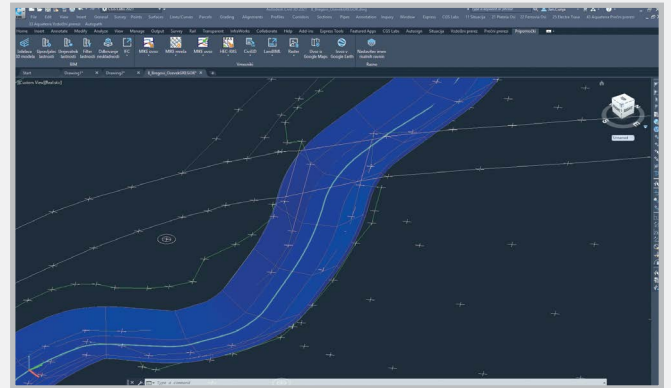
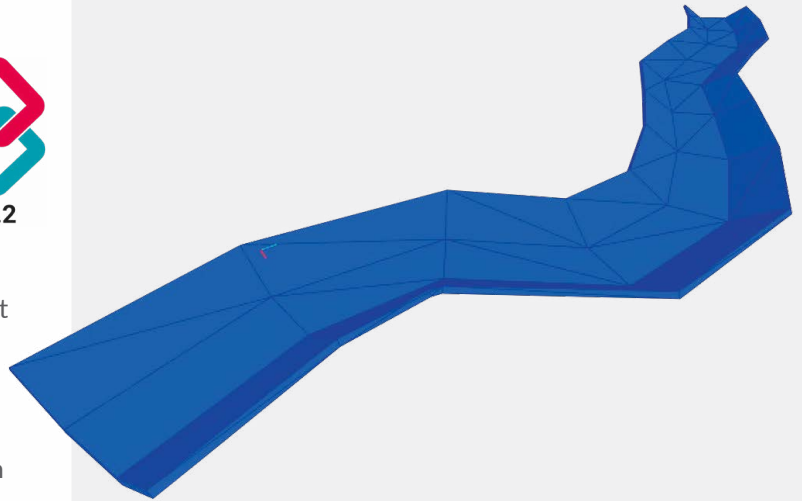


CGS Labs solutions provide extensive BIM data support not limited to CAD platforms in use. 3D roadway, railway or river channel models are generated as detailed 3D solid objects with extended BIM metadata attached to objects, or as multiple surfaces for use with computer guided machines etc.

Aquaterra offers capable Property Manager for adding and changing 3D solids property data, which enables COBie (Construction Operations Building Information Exchange) compatibility.

Aquaterra 3D models and attribute data can be exported to IFC files. IFC export format is regularly updated according to buildingSMART International specifications.

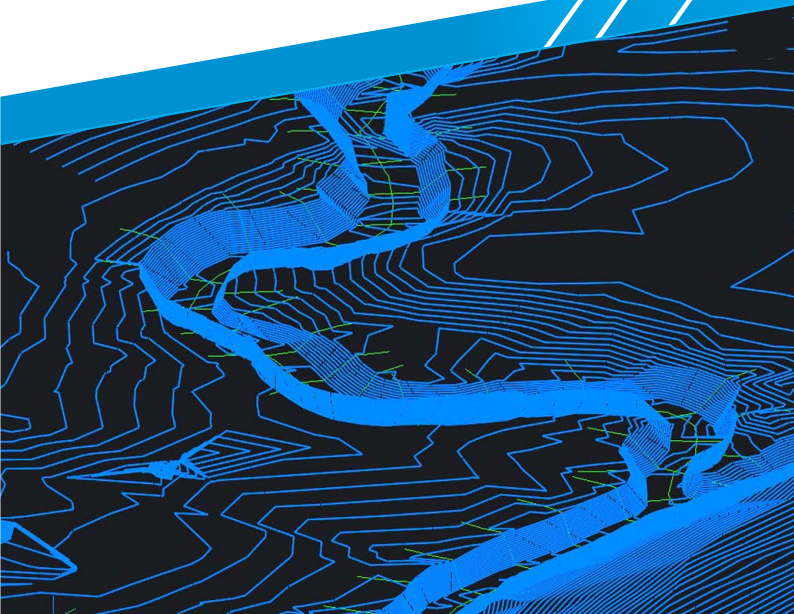
Clash detection tool enables designer to search for possible collisions among selected 3D solid objects within the drawing itself thus saving the time to export models and create clash analysis in third party applications outside CAD environment.



## URBAN & SITE DESIGN

### DIGITAL TERRAIN MODELING

The Surface creation tool is included in CGS Labs software to produce a detailed Digital Terrain Model (DTM) based on various surveys or other input data: total station data files, points, break lines, blocks, etc. This offers the possibility to use Aquaterra on plain AutoCAD or BricsCAD. Aquaterra supports also surfaces from Civil 3D and BricsCAD (V20 or newer).





## GRADING

Creation of complex slopes with multiple conditions in cut or fill gives users the capability to cover various design scenarios and geometry requirements for all kind of road projects, from simple forest road design to complex intersection geometry design.

Furthermore, creating ponds, parking areas, platforms, road, rail tracks, river channels, and other features is easier and faster with CGS Labs grading functionality.

## CHANNEL / RIVER ENGINEERING DESIGN

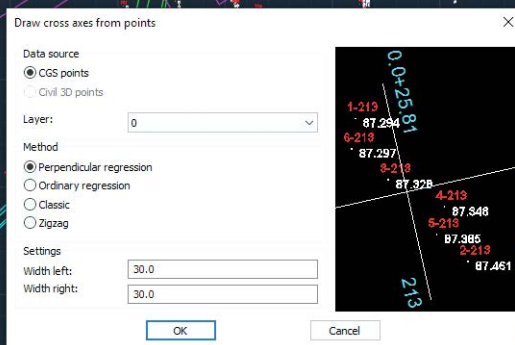
### 3D SURFACE AND 3D SOLID MODEL

Channel and river bed 3D model can be created as 3D surface or 3D solid model. 3D surface model can be generated automatically from 3D channel or river bed cross sections definition and terrain model, or it can be built with the grading function.

3D solid model is created on the basis of cross-section areas, with materials and volumes defined as extended data. All solid models, including extended data, can be imported into Autodesk Infracore, Navisworks and can be used in various BIM workflows.

### RIVER ALIGNMENT DESIGN TOOLS

Aquaterra provides a wide range of advanced alignment, profile geometry design, and editing tools. They include P(V)I design, floating and fixed elements design, alignment design created from the existing polyline, or ultimately creating a best-fit alignment based on existing channel or river bed survey data. A number of alignment labels, reports and data export options give you the flexibility to cover a wide range of user requirements.

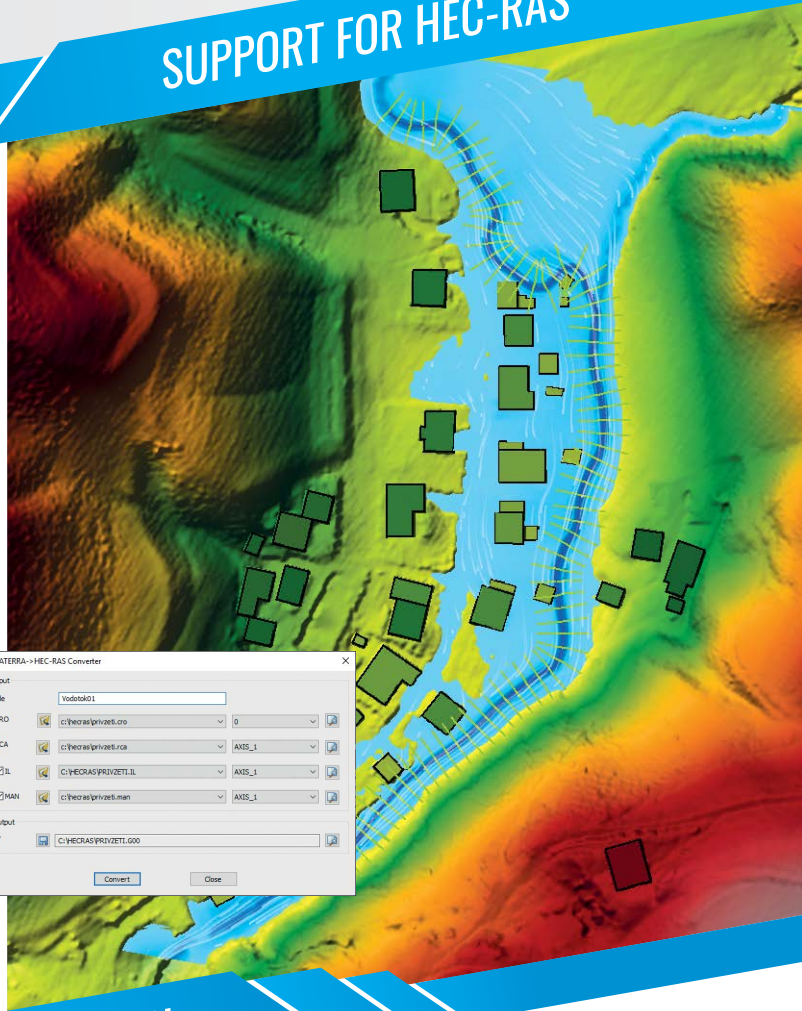
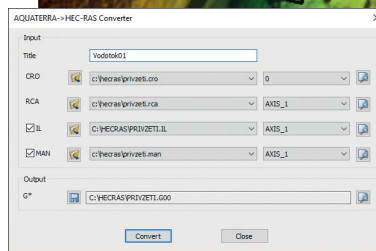




## SUPPORT FOR HEC-RAS

HEC-RAS is an established software for one-dimensional steady flow and two-dimensional unsteady flow hydraulic calculations.

Aquaterra's integrated HEC-RAS interface enables the transfer of channel or river geometry from a CAD environment into HEC-RAS where water flow calculations are made. Calculation results can be transferred back into Aquaterra where calculated water levels are displayed in profile and cross sections. Taking into account the results, engineers can now modify existing channel or river topography, using Aquaterra's advanced cross-section design and editing tools. Through Aquaterra's interface, geometry can also be imported directly from HEC-RAS, edited in Aquaterra and sent back to HEC-RAS for further analysis.

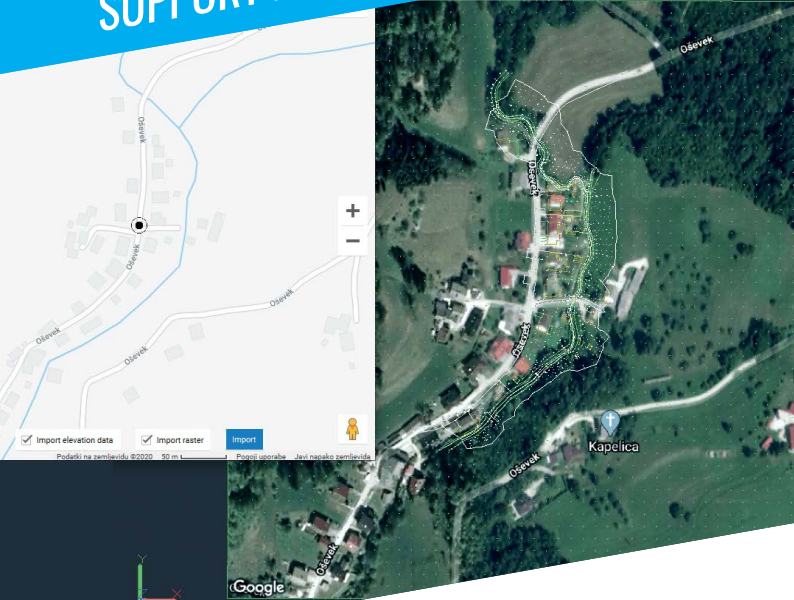


## SUPPORT FOR GOOGLE MAPS AND GOOGLE EARTH

### GOOGLE MAPS & GOOGLE STREET VIEW

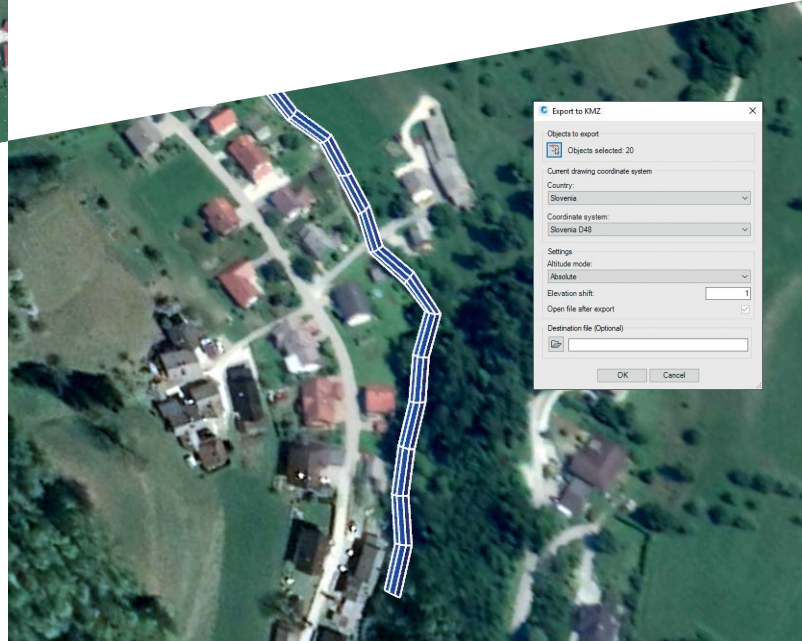
Google Maps Import makes it easy to import raster images and elevation data of a selected location from Google Maps into a DWG drawing in the selected coordinate system.

Google Street View functionality is also available to allow the user to view the selected area interactively within the CAD environment.



### GOOGLE EARTH EXPORT

BIM (3D solid) model of the infrastructure can be quickly visualized directly into Google Earth. This allows us to present the project in an environment that enables the user to have exceptional visual performances.



# GENERAL FEATURES

## DYNAMIC DATA MODEL

Aquaterra stores all design data inside a .dwg data file, making for quick geometry updates and data exchanges within CGS Labs and Autodesk software solutions. LandXML and AutoCAD Civil 3D data exchange interfaces are available. Dynamic updates to all geometry changes or design parameters are supported within single or multiple drawings with separated layout/profile and cross sections data.

## AQUATERRA SUPPORTS LARGE PROJECTS

Aquaterra easily handles large projects with very long alignments and thousands of cross-sections within seconds. Projects are neither limited in size nor is the performance critically affected while working on large scale projects, including extra long and multiple alignments, profiles, and cross section views. Cross sections can provide a high level of details with on-demand synchronization options, great processing speed, and consistent data.

## INTUITIVE USER INTERFACES AND WORKFLOWS

User oriented ribbon layout and comprehensive dialogues enable fast learning for the first time users while toolbox and command line options provide faster design options for experienced users. Aquaterra time-saving UI design and simple to follow workflows help users to use their creativity without compromising engineering efficiency. Automated functions make designs time saving.

## SUPPORTED LANGUAGE VERSIONS

Aquaterra is available in several languages. Customers are entitled to use any country specific version of the software in case of designing projects for the foreign countries.

Supported country/language versions:

- ✓ English
- ✓ German
- ✓ Croatian
- ✓ Serbian
- ✓ Slovenian

## SUPPORTED CAD PLATFORMS

Aquaterra runs on top of 2016 – 2021 versions of Autodesk AutoCAD and Civil 3D as well as BricsCAD Pro and Platinum V18 - V20.

Only 64-bit versions are supported!

DEVELOPED FOR



DEVELOPED FOR



DEVELOPED FOR





# VERSIONS

	ULTIMATE	STANDARD
Survey data import	✓	✓
Survey data import	✓	✓
Digital terrain modeling tool (CGS Labs DTM)	✓	✓
3D Grading	✓	✓
Support for Civil 3D in BricsCAD surface	✓	✓
Alignment design	✓	✓
Profile design	✓	✓
Cross sections design	✓	✓
3D River modeling	✓	✓
Points, lines and 3D solids projection to Profile View & Cross Sections Views	✓	✓
Labeling and dimensioning tools	✓	✓
Quantity Take-off & Mass Haul diagrams	✓	✓
Riverbanks design	✓	✓
River groins design	✓	✓
Water level representation	✓	✓
Interface for Civil 3D objects <-> Aquaterra	✓	✓
Support for HEC-RAS hydraulic interface	✓	✓
Support for MIKE-FLOOD by DHI hydraulic interface	✓	✗
Support for 3D Solid objects	✓	✗
BIM object property tools (manager/editor/filter)	✓	✗
3D/BIM object clash analysis within AutoCAD, Civil 3D, and BricsCAD	✓	✗
Import of Google Maps geospatial data in CAD drawing	✓	✗
Import/Export LandXML data	✓	✗
Import/Export 3D/BIM model to IFC 4.2 data format	✓	✗
Export 3D river model to Google Earth	✓	✗

# ABOUT CGS LABS

CGS Labs is innovative software company with 30 years of experience developing solutions for the design, construction and maintenance of transportation infrastructure.

We closely follow BIM trends and incorporate local design regulations and standards in our software. Our applications promote Open BIM approach and standardized IFC data exchange.

## 01 SOLUTIONS FOR INFRASTRUCTURE DESIGN

CGS labs develops specialized software solutions for the desing of roads (Plateia, Autopath, Autosign), railways (Ferrovial), channel and river engineering works (Aquaterra) and power lines design (Electra)

## 03 TECHNICAL SUPPORT

Complete customer satisfaction is very important to us. If any problems should arise while using CGS Labs software, our team of experts is there to assist you, so your design process runs without any interferences or delays. Besides that we also provide services for some more challenging engineering tasks e.g. complex custom vehicle definition for Autopah.

## 02 SOFTWARE DEVELOPMENT SERVICES

CGS Labs offers software development services that address specific problems in civil engineering design. Our resume includes development of functionalities for big international software vendors like Autodesk and Symetri.

## 04 BIM CONSULTING

CGS Labs provides consulting services to companies that are implementing BIM technologies into processes of planning, construction and maintenance of architectural and infrastructural facilities.



### SLOVENIA - Headquarters

Brnčičeva ulica 13  
1000 Ljubljana  
[www.cgs-labs.si](http://www.cgs-labs.si)



**DesignSense**

DesignSense Software Technologies Pvt. Ltd.  
#365/8, "Hasmitha Avenue", First Floor  
16th Main Road, Jayanagar 4T Block,  
Bengaluru – 560 041, India.

Call: +91 9243438300 (voice & whatsapp)  
[www.thedesingsense.com](http://www.thedesingsense.com)